

HS20X04BK

Respiratory Hygiene Station



DESCRIPTION

ORIGIN™ Respiratory Hygiene Station – Black Steel
Accessible | Sleek & Durable | Made in the USA

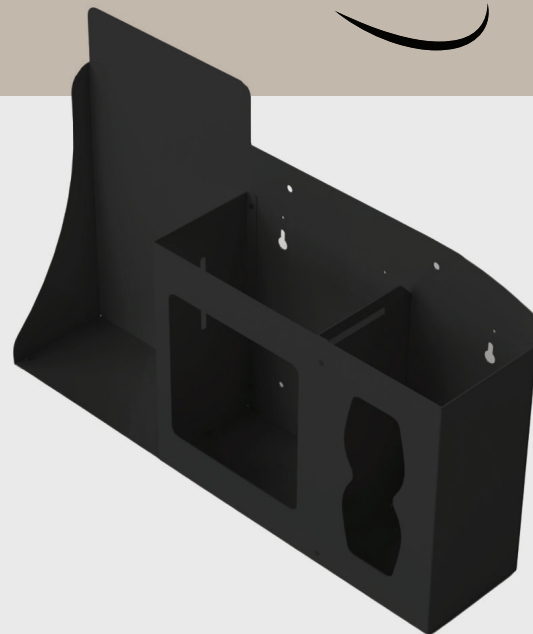
This all-in-one hygiene station keeps essential supplies neatly organized and within easy reach.

Holds two mask boxes, up to two tissue boxes, and includes a mounting space for a hand sanitizer dispenser.

Made from black powder-coated steel for a sleek appearance and built to perform in busy public or industrial environments.

Mounts directly to the wall or pairs with an ORIGIN™ Floor Stand for flexible installation.

Smart, no-fuss access where it's needed most.



TECHNICAL DATA

Dispenses	
Left Section	One hand sanitizer dispenser up to 8.50"W x 9.50"H x 4.70"D
Center Section	Boxes of earloop masks up to 8.00"W x 10.00"H x 4.70"D
Right Section	Boxes of tissues up to 5.50"W x 10.00"H x 4.75"D

Specifications	
Assembled Dimensions	22.28"W x 23.75"H x 4.85"D (56.6 cm x 60.3 cm x 43.2 cm)
Weight	5.7 lbs (2.6 kg) – approx.
Shipping Quantity	1 ea. piece
Shipping Dimensions	24.00"W x 16.00"H x 6.00"D (61.0 cm x 40.6 cm x 15.2 cm)
Shipping Weight	8.0 lbs (3.6 kg) – approx.
Material	Durable Black Powder-Coated Steel & Clear PETG

USAGE AREAS

Ideal for hospital entrances, clinic lobbies, and waiting rooms—hygiene stations provide masks, sanitizer, and tissues to support infection prevention at the first point of contact.

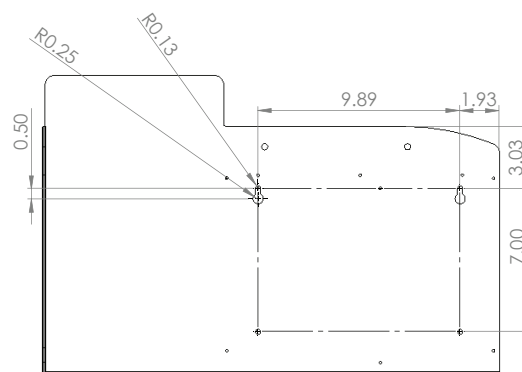
ACCESSORIES

- Sign Holder - SN10X01CL
- Floor Stand - KS10X04BK

FEATURES

- ✓ Holds two boxes of earloop-style masks, two thin tissue boxes, and one hand sanitizer dispenser (not included).
- ✓ Easy assembly. All hardware included.
- ✓ Made in USA.

MOUNTING SPECIFICATIONS



ORIGIN™ DISPENSING SOLUTIONS, LLC

Organization Begins With Us.

P: 360.912.9805

E: CustomerService@OriginDispensingSolutions.com

W: www.OriginDispensingSolutions.com

Product specifications are subject to change without notice.
Accessories and consumable items sold separately.

© 2025 ORIGIN Dispensing Solutions, LLC. All rights reserved.

HS20X04BK-TDS01